

CONTROL FEATURES

- 5-channel DMX-512 rotating LED pinspot
- Pan: 540° / Tilt: 330° (manual)
- Variable electronic strobe
- Variable electronic dimmer (0 – 100%)
- Vector speed channel for pan
- Built-in movement macros via DMX

ADDITIONAL FEATURES

- High-power, 3W (700mA) LED
- Additional power output: max 35 units @ 120V
- Includes multiple lenses to change beam angles
- User-selectable pan ranges: 540°, 360°, 270°, 180°, 90°
- Built-in automated programs via master/slave with adjustable pan ranges
- Built-in sound activated programs via master/slave with adjustable pan ranges

SPECIFICATIONS

- Beam angle: 6° (installed lens) 9° (additional lens included)
- Lux (6°): 15,000 @ 1m
- Lux (9°): 5,550 @ 1m
- Light source: 1 x 3W (700mA) white LED 50,000hrs (6,500 K)
- Power and current: 120V, 60Hz: 11W, 0.2A operating, 0.2A inrush
- Power and current: 230V, 50Hz: 11W, 0.1A operating, 0.2A inrush
- AC power: Autoswitching 100V – 240V 50/60Hz
- Weight: 3.5lbs (1.6kg)
- Size: 6.9in x 6.2in x 10.7in
174mm x 158mm x 273mm

LED PINSPOT 360



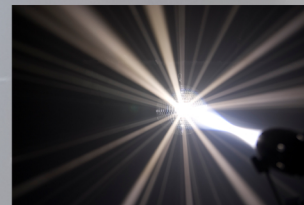
FEATURES

- Compact hard-edge LED pinspot
- High-power, 3W (700mA) LED
- Includes multiple lenses to change beam angles

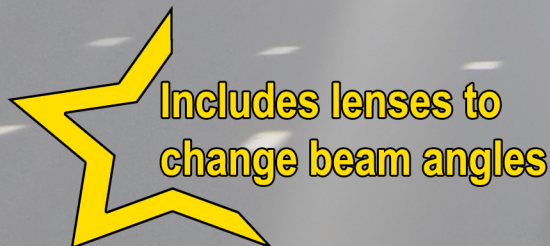
SPECIFICATIONS

- Beam angle: 6° (installed lens) 9° (additional lens included)
- Lux (6°): 15,000 @ 1m
- Lux (9°): 5,550 @ 1m
- Light source: 1 x 3W (700mA) white LED 50,000hrs (6,500 K)
- Power and current: 120V, 60Hz: 4W, 0.1A operating, 0.1A inrush
- AC power: Autoswitching 100V – 240V 50/60Hz
- Weight: 0.9lb (0.4kg)
- Size: 7.6in x 4.2in x 5.9in
193mm x 105mm x 148mm

LED PINSPOT 2



4 FREE gels included!



www.chauvetlighting.com
info@chauvetlighting.com
t: 954.929.1115
3000 North 29th Court
Hollywood, FL 33020

CHAUVET
Value • Innovation • Performance