



# Without OT series

## *User's Manual*



**125.2**



**125.4**



**250.2**



**250.4**

---

## SAFETY RELATED SYMBOLS

---



The symbol is used to indicate that some hazardous live terminals are involved within this apparatus, even under the normal operating conditions.



The symbol is used in the service documentation to indicate that specific component shall be only replaced by the component specified in that Documentation for safety reasons.



Protective grounding terminal.



Alternating current /voltage.



Hazardous live terminal .

ON: Denotes the apparatus turns on.

OFF: Denotes the apparatus turns off, because of using the single pole switch, be sure to unplug the AC power to prevent any electric shock before you proceed your service.

**WARNING:** Describes precautions that should be observed to prevent the danger of injury or death to the user.



Disposing of this product should not be placed in municipal waste and should be separate collection.

**CAUTION:** Describes precautions that should be observed to prevent danger of the apparatus.

---

## WARNING

---

### • Power Supply

Ensure the source voltage matches the voltage of the power supply before turning

Unplug this apparatus during lightning storms or when unused for long periods of time.

### • External Connection

The external wiring connected to the output hazardous live terminals requires installation by an instructed person, or the use of ready-made leads or cords.

### • Do not Remove any Cover

There are maybe some areas with high voltages inside, to reduce the risk of electric shock, do not remove any cover if the power supply is connected.

The cover should be removed by the qualified personnel only.

No user serviceable parts inside.

### • Fuse

To prevent a fire, make sure to use fuses with specified standard (current, voltage, type). Do not use a different fuse or short circuit the fuse holder.

Before replacing the fuse, turn OFF the apparatus and disconnected the power source.

### • Protective Grounding

Before turning the product ON, make sure that it is connected to Ground. This is to prevent the risk of electric shock. Never cut internal or external Ground wires. Likewise, never remove Ground wiring from the Protective Ground Terminal.

Never cut off the internal or external protective grounding wire or disconnect the wiring of protective grounding terminal.

The apparatus shall be connected to a mains socket outlet with a protective earthing connection.

## • Operating Conditions

This apparatus shall not be exposed to dripping or splashing and that no objects filled with liquids, such as vases, shall be placed on this apparatus.

To reduce the risk of fire or electric shock, do not expose this apparatus to rain or moisture.

Do not use this apparatus near water. Install in accordance with the manufacturer's instructions. Do not install near any heat sources such as radiators, heat registers, stoves, or other apparatus (including amplifiers) that produce heat. Do not block any ventilation openings.

No naked flame sources, such as lighted candles, should be placed on the apparatus.

---

## IMPORTANT SAFETY INSTRUCTIONS

---

- Read these instructions.
- Follow all instructions.
- Keep these instructions.
- Heed all warnings.
- Only use attachments/accessories specified by the manufacturer.

## • Power Cord and Plug

Do not defeat the safety purpose of the polarized or grounding type plug.

The mains plug is used as the disconnecting device, the disconnecting device shall remain readily operable.

A polarized plug has two blades with one wider than the other. A grounding type plug has two blades and a third grounding prong. The wide blade or the third prong are provided for your safety. If the provided plug does not fit into your outlet, consult an electrician for replacement of the obsolete outlet.

Protect the power cord from being walked on or pinched particularly at plugs, convenience receptacles, and the points where they exit from the apparatus.

## • Cleaning

When the apparatus needs a cleaning, you can blow off dust from the apparatus with a blower or clean with rag etc.

Don't use solvents such as benzol, alcohol, or other fluids with very strong volatility and flammability for cleaning the apparatus body. Clean only with dry cloth.

## • Servicing

Refer all servicing to qualified personnel. To reduce the risk of electric shock, do not perform any servicing other than that contained in the operating instructions unless you are qualified to do so.

Servicing is required when the apparatus has been damaged in any way, such as power supply cord or plug is damaged, liquid has been spilled or objects have fallen into the apparatus, the apparatus has been exposed to rain or moisture, does not operate normally, or has been dropped.

# TABLE OF CONTENTS

1.FUNCTIONAL CHARACTERISTICS DESCRIPTION.....	1
2.FRONT PANEL.....	2
3.REAR PANEL.....	3
4.TECHNICAL SPECIFICATIONS.....	4
5.INPUT AND OUTPUT CNNECTION DIAGRAN.....	5
6.WIRING DIAGRAN .....	15

## **I.FUNCTIONAL CHARACTERISTICS DESCRIPTION**

Without OT series is pure after level power amplifier, suitable for professional music playing and public address system.

The main function and characteristics:

- 1, The PA amplifier without output transformer, can output 4 ohm / 70 V / 100 V.
- 2, 4 ohm / 70 V / 100 V output can be through the selector switch control.
- 3, Each channel has independent balance input terminal.
- 4, Each channel has the independence the volume control knob.
- 5, Input can select MONO or DUAL.
- 6, Can choose broadband output or L/H CUT.
- 7, The channel independent SIG, 4 ohm, 70 v, 100 v, PRO instructions.
- 8, With temperature protection, output overload protection and DC protection function.
- 9, Have professional sound quality of the power amplifier and PA PA remote transmission function.
- 10, Concise and beautiful appearance, which can be put in system collocation.

2.FRONT PANEL

1).125.2



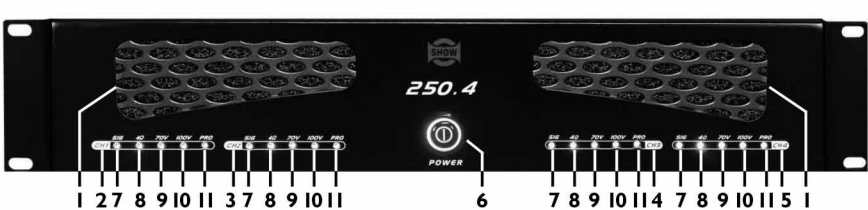
2).125.4



3).250.2



4).250.4

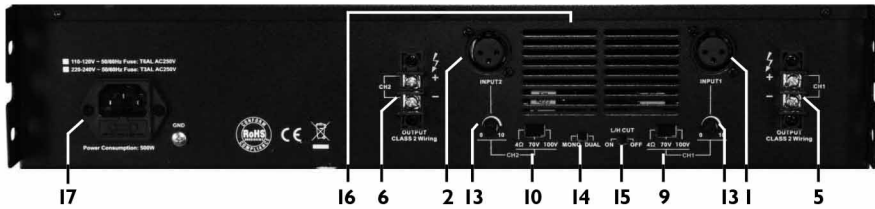


Notice: 1.IN THE WIND WINDOW DISPLAY  
3.CH2 LED DISPLAY  
5.CH4 LED DISPLAY.  
7.SIGNAL DISPLAY  
9.70V OUTPUT DISPLAY  
11.PROTECT DISPLAY

2.CH1 LED DISPLAY  
4.CH3 LED DISPLAY  
6.POWER SWITCH  
8.4Ω OUTPUT DISPLAY  
10.100V OUTPUT DISPLAY

### 3.REAP PANL

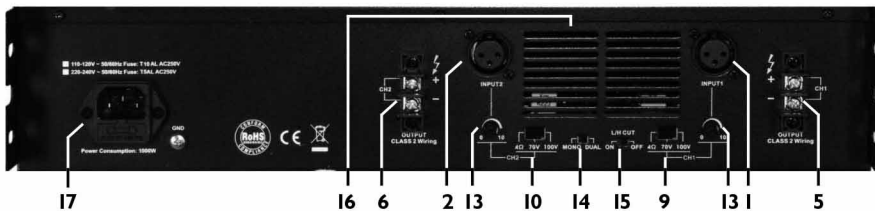
#### 1).125.2



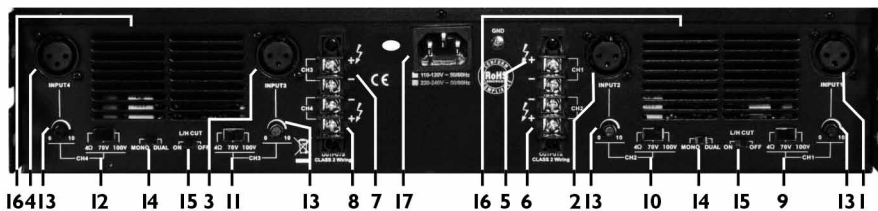
#### 2).125.4



#### 3).250.2



#### 4).250.4



Notice:1.CH1 INPUT

3.CH3 INPUT

5.CH1 OUTPUT

7.CH3 OUTPUT

9.CH1 OUTPUT SELECT(4Ω/70V/100V)

11.CH3 OUTPUT SELECT(4Ω/70V/100V)

13.VOLUME CONTROL(CH1-CH4)

15.L/H CUT(ON/OFF)

17.AC INPUT

2.CH2 INPUT

4.CH4 INPUT

6.CH2 OUTPUT

8.CH4 OUTPUT

10.CH2 OUTPUT SELECT(4Ω/70V/100V)

12.CH4 OUTPUT SELECT(4Ω/70V/100V)

14.MONO/DUAL

16.OUT OF THE WIND WINDOW

## 4. TECHNICAL SPECIFICATIONS

MODEL	I25.2 / 250.2	I25.4 / 250.4
Power output (1kHz / 4 $\Omega$ ):	RMS 125W*2 / 250W*2	RMS 125W*4 / 250W*4
Frequency response:	L/H CUT OFF 20Hz - 20kHz / L/H CUT ON 200Hz - 10kHz ( $\pm$ 1dB)	L/H CUT OFF 20Hz - 20kHz / L/H CUT ON 200Hz - 10kHz ( $\pm$ 1dB)
Power supply :	AC 115V / 230V 50Hz / 60Hz	AC 115V / 230V 50Hz / 60Hz
Inputs (balance / 1kHz) :	0 $\pm$ 1.5 dBv	0 $\pm$ 1.5 dBv
Maximum Input Level (balance / 1kHz)	20dBv $\pm$ 1.5dBv	20dBv $\pm$ 1.5dBv
THD+N (1kHz / -3dBv) :	< 0.1%	< 0.1%
S / N Ratio:	> 95 dB	> 95 dB
CMRR (balance / 1kHz) :	> 60dB	> 60dB
Crosstalk (1kHz) :	> 60dB	> 60dB
Outputs :	4 $\Omega$ / 70V / 100V switchable	4 $\Omega$ / 70V / 100V switchable
Dimension (W x D x H) :	434mm x 353mm x 88.5mm ( 17.1" x 13.9" x 3.5" )	434mm x 425mm x 88.5mm ( 17.1" x 16.7" x 3.5" )
Weight (Approx.) :	6.9kg (15.2 lbs) / 7.5kg (16.53bs)	9.2kg (20.28bs) / 9.8kg (21.60bs)

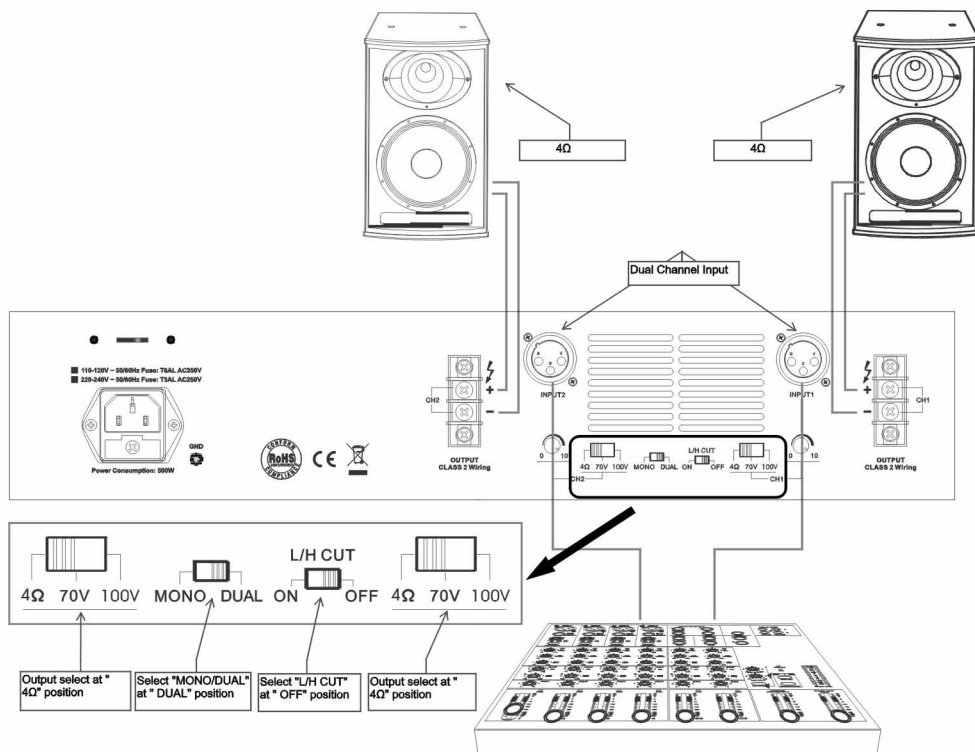


## 5.INPUT AND OUTPUT CONNECTION DIGGRAN

Figure 1:

**CH1/CH2 loaded with 4Ω,dual channel input:**

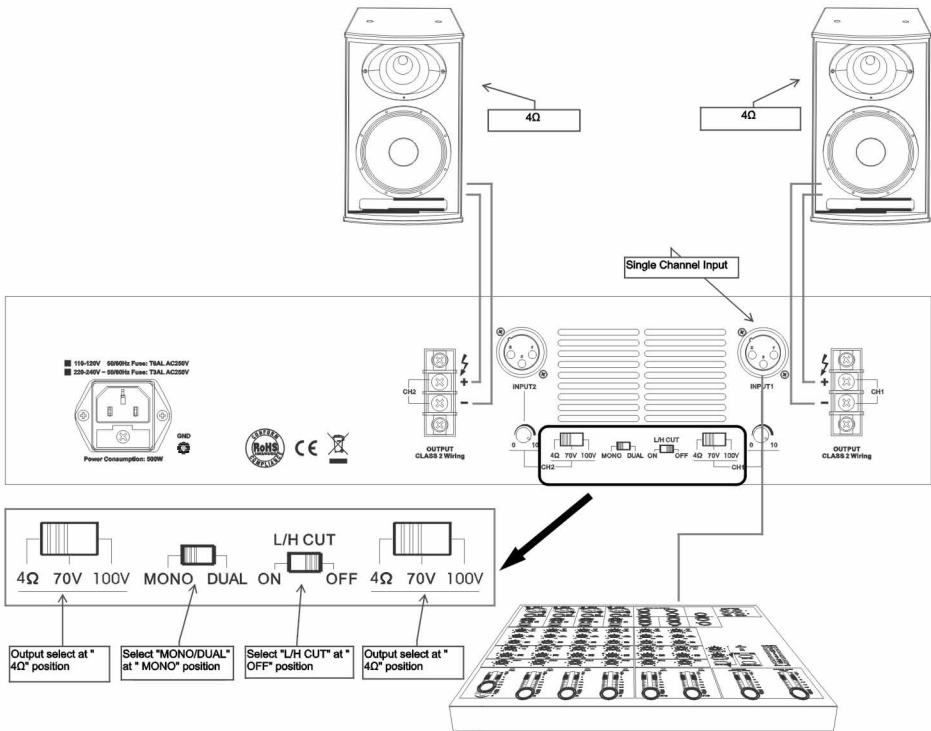
- 1. Select "MONO/DUAL" at " DUAL " position, dual channel input;**
- 2. CH1/CH2 output select at " 4Ω " position, both loaded with 4Ω;**
- 3. Select "L/H CUT" at " OFF " position, for music broadcast to improve quality;**



**Figure 2:**

**CH1/CH2 loaded with 4Ω, single channel input:**

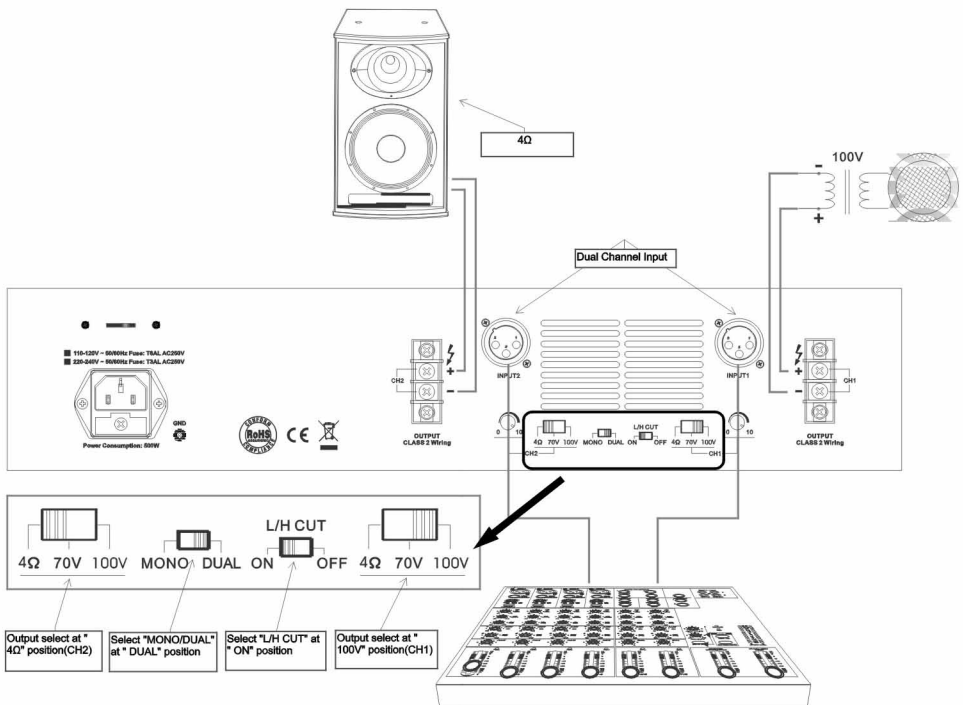
- 1. Select "MONO/DUAL" at " MONO" position, single channel input;**
- 2. CH1/CH2 output select at " 4Ω" position, both loaded with 4Ω;**
- 3. Select "L/H CUT" at " OFF" position, for music broadcast to improve quality;**



**Figure 3:**

**CH1 loaded with 100V, CH2 loaded with 4Ω, dual channel input:**

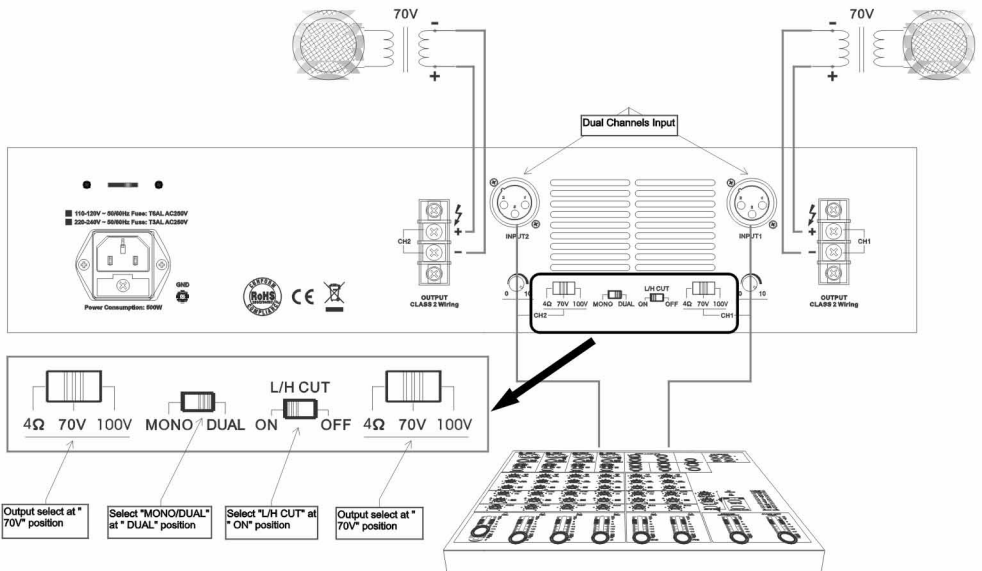
- 1. Select "MONO/DUAL" at " DUAL" position, dual channel input;**
- 2. CH1 output select at " 100V" position, loaded with rated 100V speaker;**  
**CH2 output select at " 4Ω" position, loaded with 4Ω;**
- 3. Select "L/H CUT" at " ON" position, to prevent low frequency protection and improve the transmission efficiency. Applicable to Public Address System;**



**Figure 4:**

**CH1/CH2 loaded with 70V, dual channel input:**

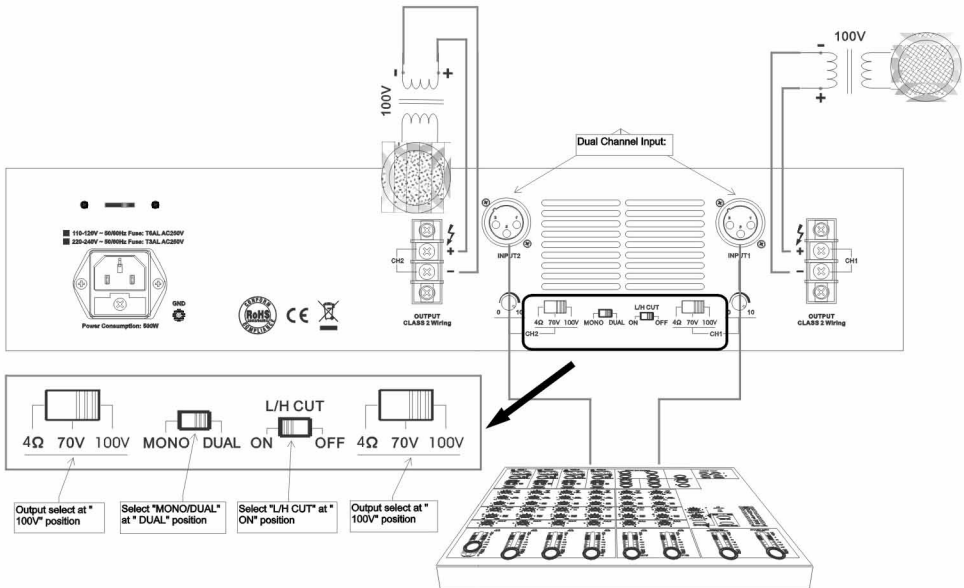
- 1. Select "MONO/DUAL" at " DUAL " position, dual channel input;**
- 2. CH1/CH2 output select at " 70V " position, both loaded with rated 70V speaker;**
- 3. Select "L/H CUT" at " ON " position, to prevent low frequency protection and improve the transmission efficiency. Applicable to Public Address System;**



**Figure 5:**

**CH1/CH2 loaded with 100V, dual channel input:**

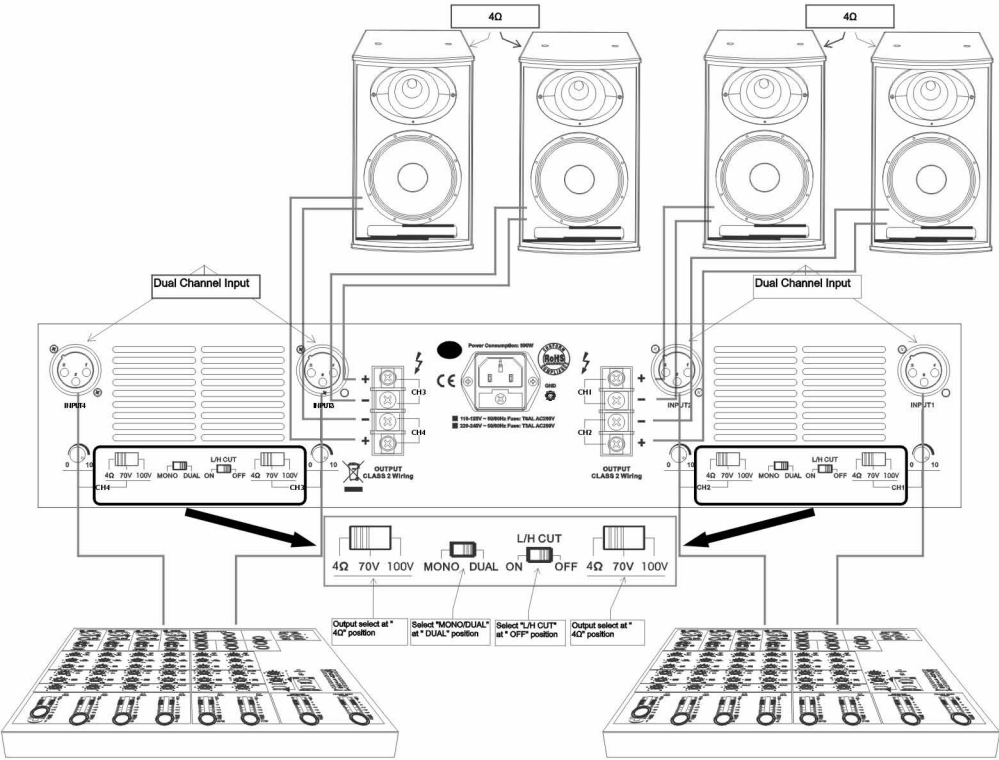
- 1. Select "MONO/DUAL" at " DUAL " position, dual channel input;**
- 2. CH1/CH2 output select at " 100V " position, both loaded with rated 100V speaker;**
- 3. Select "L/H CUT" at " ON " position, to prevent low frequency protection and improve the transmission efficiency. Applicable to Public Address System;**



**Figure 6:**

**CH1/CH2/CH3/CH4 loaded with 4Ω,dual channel input:**

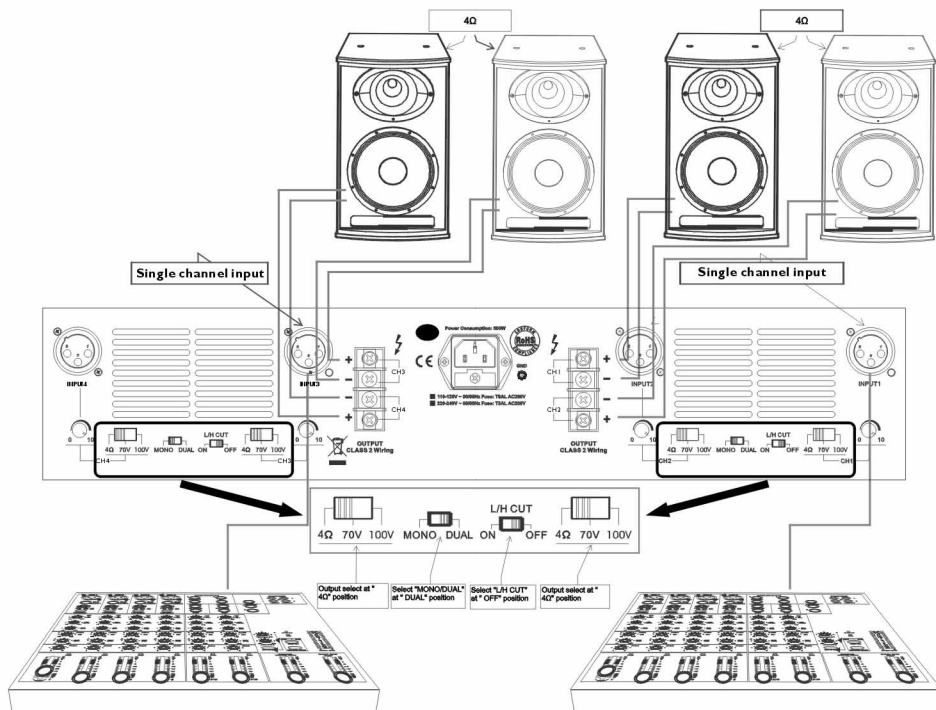
- 1. Select "MONO/DUAL" at " DUAL" position, dual channel input;**
- 2. CH1/CH2/CH3/CH4 output select at " 4Ω" position, both loaded with 4Ω;**
- 3. Select "L/H CUT" at " OFF" position, for music broadcast to improve quality;**



**Figure 7:**

**CH1/CH2/CH3/CH4 loaded with 4Ω, single channel input:**

- 1. Select "MONO/DUAL" at " MONO" position, single channel input;**
- 2. CH1/CH2/CH3/CH4 output select at " 4Ω" position, both loaded with 4Ω;**
- 3. Select "L/H CUT" at " OFF" position, for music broadcast to improve quality;**



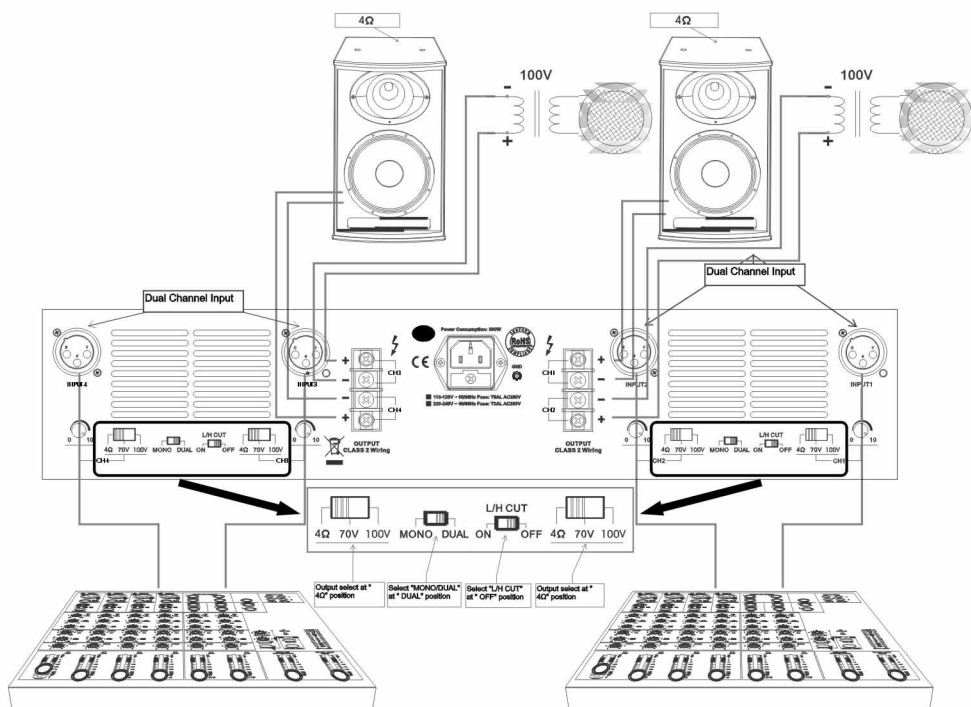
**Figure 8:**

**CH2/CH3 loaded with 100V, CH1/CH4 loaded with 4Ω, dual channel input:**

- 1. Select "MONO/DUAL" at " DUAL" position, dual channel input;**
- 2. CH2/CH3 output select at " 100V" position, loaded with rated 100V speaker;**

**CH1/CH4 output select at " 4Ω" position, loaded with 4Ω;**

- 3. Select "L/H CUT" at " ON" position, to prevent low frequency protection and improve the transmission efficiency. Applicable to Public Address System;**

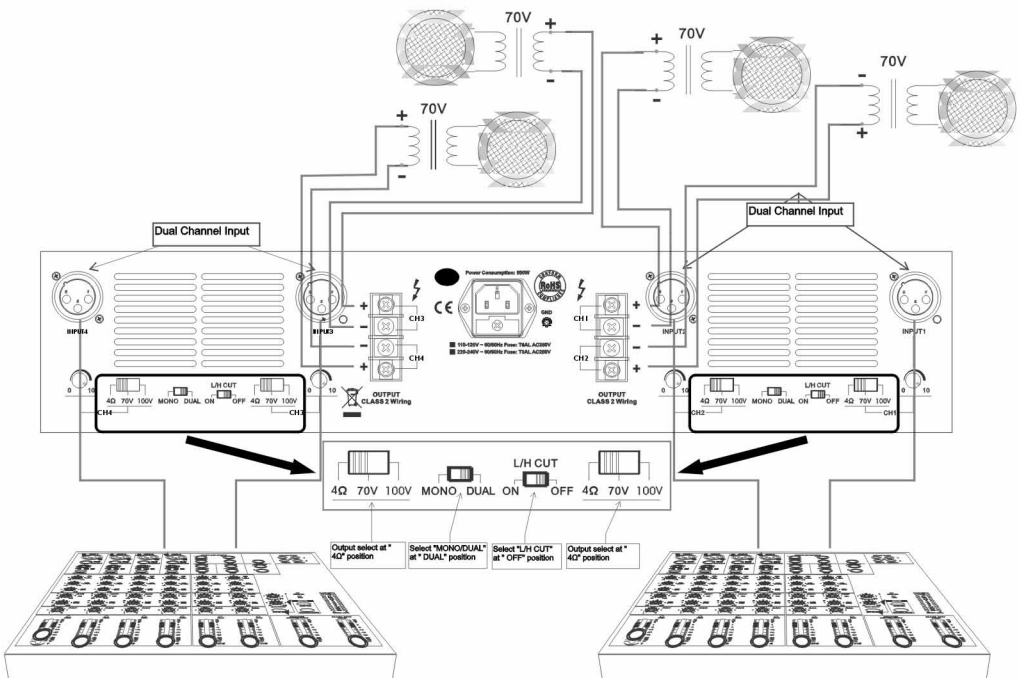




**Figure 9:**

**CH1/CH2/CH3/CH4 loaded with 70V, dual channel input:**

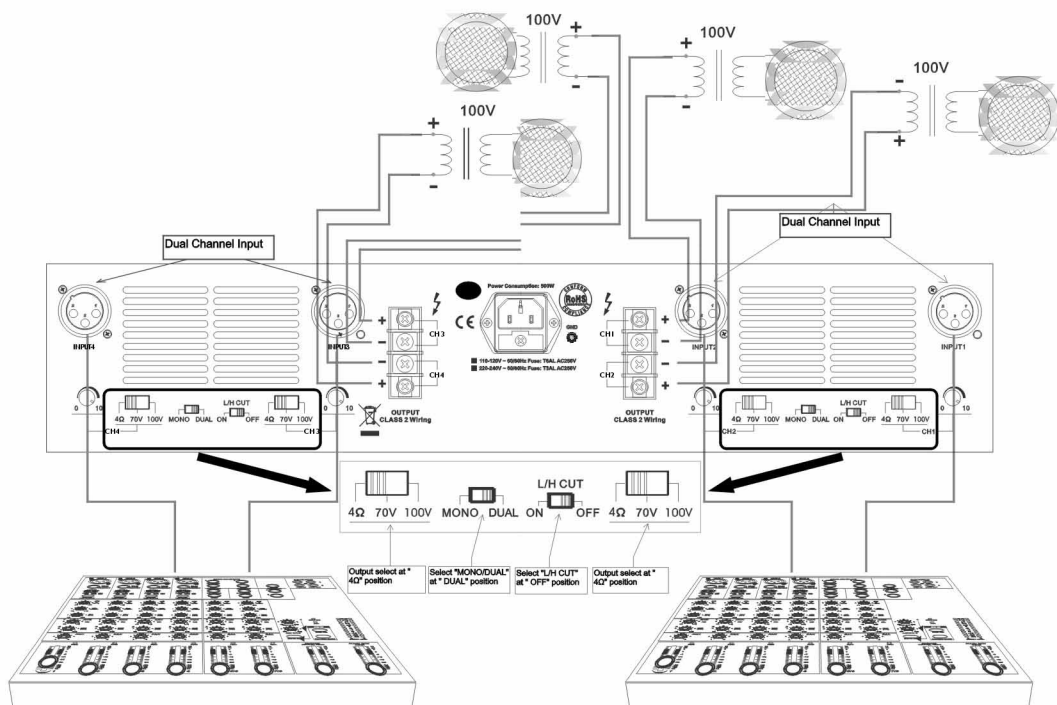
- 1. Select "MONO/DUAL" at " DUAL" position, dual channel input;**
  - 2. CH1/CH2/CH3/CH4 output select at " 70V" position, both loaded with rated 70V speaker;**
  - 3. Select "L/H CUT" at " ON" position, to prevent low frequency protection and improve the transmission efficiency.**
- Applicable to Public Address System;**



**Figure 10:**

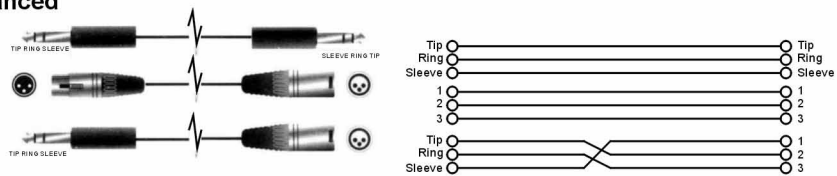
**CH1/CH2/CH3/CH4 loaded with 100V, dual channel input:**

- 1. Select "MONO/DUAL" at " DUAL" position, dual channel input;**
- 2. CH1/CH2/CH3/CH4 output select at " 100V" position, both loaded with rated 100V speaker;**
- 3. Select "L/H CUT" at " ON" position, to prevent low frequency protection and improve the transmission efficiency. Applicable to Public Address System;**

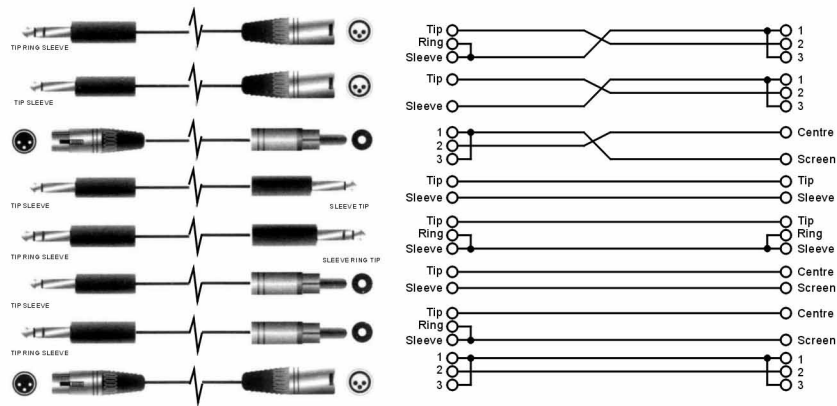


# 6.WIRING DIAGRAM

## • Balanced



## • Unbalanced



***SEIKAKU TECHNICAL GROUP LIMITED***  
**SEKAKU ELECTRON INDUSTRY (D.G.) CO. LTD.**  
**West City Science Park Heng Li town, Dong Guan City, Guang Dong**  
**Tel:86-0769-3721369 Fax:86-0769-3721330**  
**<http://www.show-pa.com.cn> e-mail: [sekaku@sekaku.com](mailto:sekaku@sekaku.com)**

All rights reserved to SEIKAKU. All features and content might be changed without prior notice. Any photocopy, translation, or reproduction of part of this manual without written permission is forbidden. Copyright © 2005 Seikaku Group